



September 2024

SADIE OSTROWSKI SHARES YLC EXPERIENCE

Sadie Ostrowski, a student at Wittenberg-Birnamwood High School, said she originally decided to attend this year's Youth Leadership (YLC) Conference at UW-Stout in July because it would be a great opportunity help prepare her for college and help her obtain scholarships for college.

"I thought that would be a good step forward," Ostrowski said.

But at the conclusion of YLC, Ostrowski realized she had gotten more out of YLC than just helping to prepare her for college. She said in addition to having a lot of fun at YLC, she also learned a lot. This came from the many speakers who spoke at YLC, including two linemen from Central Wisconsin Electric Cooperative, who spoke about their time working on the Light Up Navajo Project on the Navajo Nation in Arizona, to bring electricity to residents who don't have it.

"It was just a really great experience," Ostrowski said.



[READ THE REST OF THE ARTICLE](#)

SURGE PROTECTION 101

A power surge is an unexpected increase in voltage, and it can occur from a variety of sources. Regardless of the cause, power

surges can majorly damage electronic devices and equipment in your home.

Let's take a look at common causes of power surges and how you can protect your sensitive electronics.

One of the most common causes of a power surge is lightning. Most of us have experienced this during a severe thunderstorm. When lightning strikes an electrical system, the excess current must be channeled somewhere-- unfortunately in many cases, it's sent through a home. Your best bet is to unplug all unused devices and electronics during severe thunderstorms.



[READ THE REST OF THE ARTICLE](#)

OPERATION ROUND UP CONTINUES TO HELP

Operation Round Up provides funds for worthwhile causes, including member hardship cases, educational purposes including scholarships, and charitable organizations. It is funded by volunteer donations from CWEC co-op members, allowing them the opportunity to give back to our local communities, a few cents each month. Electric bills are simply "rounded up" to the next whole dollar amount. The monthly "round up" could be as little as a single penny, but never more than ninety-nine cents. The average donation is \$6 annually, which is tax deductible. Operation Round Up is an opt-out program.

The funds are held separately from any Central Wisconsin Electric Cooperative funds and are administered by a member Board of Trustees. Applications are made for grants and these are reviewed quarterly for disbursement of funds.



[READ THE REST OF THE ARTICLE](#)

10 WAYS TO SAVE ENERGY IN THE LAUNDRY ROOM

Your clothes washer and dryer account for a significant portion of energy consumption from major appliances, and let's face it-- laundry is no one's favorite chore.

Make the most of your laundry energy use. There are several easy ways you can save energy (and money) in the laundry room. The Department of Energy recommends the following tips for saving on suds:



1. **Wash with cold water.** Switching from warm water to cold water can cut one load's energy use by more than half, and by using a cold-water detergent, you can still achieve that brilliant clean you'd normally get from washing in warm water.
2. **Wash full loads when possible.** Your washing machine will use the same amount of energy no matter the size of the clothes load, so fill it up if you can.

READ THE REST OF THE ARTICLE

CHECK OFF STEP 1 IN BECOMING A CO-OP VOTER

REGISTER TO VOTE ON NVRD

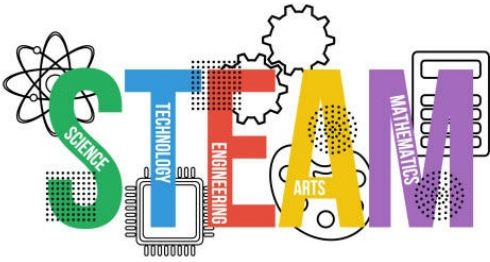
Learn more about being a #CoopVoter and complete your registration at www.vote.coop

CO-OPS VOTE

WISCONSIN CO-OPERATIVE VOTER REGISTRATION

STEAM GRANT APPLICATION DEADLINE APPROACHING

The next deadline for area school districts to apply for STEAM grant funding through Central Wisconsin Electric Cooperative (CWEC) is Oct. 1. Public schools in Bowler, Iola-Scandinavia, Rosholt, Tigerton, and Wittenberg-Biramwood are eligible to apply. Public Charter, Private, and Home Schools are also eligible if they are located within a township that CWEC serves.



Knowing the value of education and training and understanding classrooms may have limited funds, CWEC launched the STEAM grant program in 2022 to support STEAM (Science, Technology, Engineering, Art, and Math) projects and initiatives.

MORE INFORMATION ABOUT CWEC STEAM GRANTS

GO ABOVE AND BEYOND FOR A SAFE HARVEST

Modern farming often relies on data and equipment with GPS and auto-guidance systems. However, even with these modern conveniences, farm workers must remain vigilant. That's because farming is considered one of the most dangerous jobs.

Massive machinery is indispensable to farming, but the same impressive size, height and extensions make them particularly vulnerable to contacting power lines. That's why staying alert, focused and knowledgeable about potential hazards and safety procedures is crucial.

During a busy harvest season, the familiar sights around the farm can easily fade into the background, and farm workers can overlook the power lines overhead. However, failing to notice them can lead to deadly accidents.

READ THE REST OF THE ARTICLE

5 Tips for a Safe Harvest

Electrical safety during harvest season requires vigilance and proactive measures. Follow these tips to reduce the risk of electrical accidents.

1. Maintain at least a 10-foot distance from power lines when operating equipment like grain augers, elevators and other tall machinery.
2. Use a spotter to navigate safely around power lines and other electrical equipment.
3. Ensure all farm workers are trained on electrical safety procedures.
4. Regularly inspect all electrical equipment and machinery for signs of wear and damage.
5. Keep first aid kits and emergency contact numbers in an easily accessible location.



SCHOOL BUS SAFETY FOR MOTORISTS & CHILDREN

When you see a school bus slowing down or stopping, it's not just the bus that you need to have your eyes on – but the surrounding area too. Children wait at least several feet away from a bus and often cross the street when they're boarding or getting off the bus. This is why you must stop for school buses, and don't attempt to pass.

Illegal School Bus Passing



Illegal school bus passing poses a significant threat to children and others on the road. In every state, it is illegal for you to pass a school bus while the stop-arm is extended and the red lights are flashing.

Understanding School Bus Lights

Learn the school bus laws and always follow them, as well as the flashing lights that school bus drivers use to alert you.

[READ THE REST OF THE ARTICLE](#)

[Bill Payment Options](#)

[Energy Conservation Rewards](#)

[Small Business Loans](#)

[Operation Round Up Information](#)

[Thinking about adding solar energy?](#)

[Community Events Calendar](#)



Central Wisconsin Electric Cooperative
10401 Lystul Road
Rosholt, WI 54473
715-677-2211

[Contact Us](#)

Central Wisconsin Electric Cooperative | 10401 Lystul Road | Rosholt, WI 54473 US

[Unsubscribe](#) | [Update Profile](#) | [Constant Contact Data Notice](#)



Try email marketing for free today!