



May 2024

## ALMOST 250 MEMBERS & GUESTS ATTEND CWEC ANNUAL MEETING

The 86<sup>th</sup> Annual Meeting for Central Wisconsin Electric Cooperative (CWEC) was held April 18 at Iola-Scandinavia High School in Iola. There were 236 members and guests in attendance, with 177 of them registered members of the co-op.

For the safety message, Kevin Kurtzweil, vice president of Operations for CWEC, told those in attendance that only CWEC personnel are qualified to remove an electric meter. If a meter needs a meter removed for any reason, the member should contact CWEC to have a lineman come remove the meter.



Kurtzweil also provided an update on the installation of CWEC's new meter system. The project is 95% completed, with only 459 meters remaining to be installed. Kurtzweil also highlighted the annual inspections that were completed in 2023, as well as work plan projects that were completed.

A recap of the outages in 2023 was also reviewed. The number of outages decreased from 512 outages in 2022 to 318 outages in 2023.

[READ THE REST OF THE ARTICLE](#)

# YOUTH LEADERSHIP CONFERENCE SCHEDULE FOR JULY 16-18

Each year Central Wisconsin Electric Cooperative (CWEC) sponsors students from area high schools to attend the Youth Leadership Conference (YLC). This year's YLC will be held at UW-Stout, July 16-18. To register for YLC, or if you have any questions, contact [Bert.Lehman@cwecoop.com](mailto:Bert.Lehman@cwecoop.com)



The Conference is a three-day event for youth leaders across Wisconsin to develop their leadership skills while learning about the purpose, operation, and scope of cooperative businesses. The Conference is open to high school students. Attendance will be limited to 200 students based on a first-come, first-registered basis.

The event is sponsored by Wisconsin's electric cooperatives and facilitated by WECA. It's a unique opportunity for youth across Wisconsin to develop their leadership skills while learning the purpose, operation, and scope of cooperative business.

FOR MORE INFORMATION ABOUT YLC

## ENERGY SCAMS UNMASKED

Consumers with water, gas and electricity connections have long been targets for utility scams. But in today's digital world, every swipe and click increases the risk of potential scams.

Scammers are more sophisticated than ever before, and they understand our increasing reliance on technology. With their sharpened digital knives, scammers have adapted their tactics to trick unsuspecting consumers through a variety of methods.

### SIGNS OF AN

## ENERGY SCAM

#### High-Pressure Tactics

Scammers will pressure you, creating a sense of urgency. Claims that your power will be disconnected without immediate payment are common with utility scams.

#### Sketchy Payment Methods

Scammers may ask for unusual payment methods like gift cards or cryptocurrency. In these cases, it's likely a scam.

#### Dodgy Communication

Whether an email, text message or letter, utility scams typically include poor grammar, spelling errors or unusual email addresses. These are common warning signs of a scam.

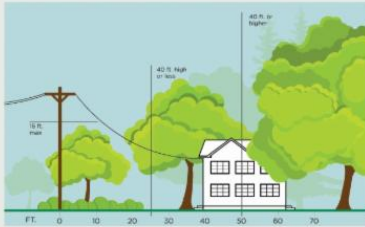


Central Wisconsin Electric Cooperative (CWEC) wants to help you avoid energy scams, which can result in a financial loss or leak of your personal information. Here are some of the latest utility scams, as well as tips to help you stay safe from even the craftiest scammers.

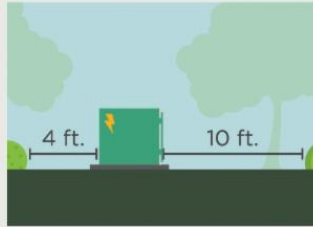
# 3 Ways to Help Limit Tree Trimming

Did you know electric utilities are required to trim trees and other types of vegetation that grow too close to overhead power lines? We know you love your trees, and we will do everything we can to avoid trimming them. Here's how you can help:

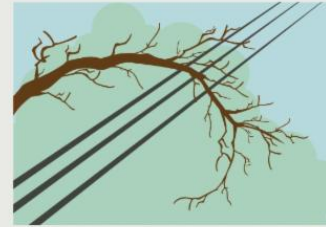
**1. Plant trees in the right place.** Trees that will be <40 ft. should be planted at least 25 ft. away from power lines (>40ft. should be at least 50 ft. away).



**2. Don't block pad-mounted transformers.** Plant shrubs at least 10 ft. away from transformer doors and 4 ft. from transformer sides.



**3. Report dangerous branches.** If you spot a tree or branch that is dangerously close to power lines, please let us know.



**Trimming improves safety for all. Let's work together to enjoy the beauty of trees and reliable electricity.**

## POWER UP YOUR LAWN CARE WITH ELECTRIC EQUIPMENT

Now that the weather has finally warmed up, it's time to get moving on the yardwork that needs to be done. Some of this yardwork may include the need for digging on your property. If that is the case, property owners need to take proper safety steps.

The first step to ensure safe digging is to call Diggers Hotline

at 811. Diggers Hotline is a free service that must be used if you plan on doing any kind of digging in order to avoid damaging underground lines. A property owner must call Diggers Hotline at least three working days before they start digging.

Source: Consumer Reports

Making the Switch to **ELECTRIC LAWN EQUIPMENT**

Considering electric equipment to maintain your outdoor space? Check out the benefits of electric and considerations before making the switch.

Benefits of Electric Equipment	Considerations Before Going Electric
<ul style="list-style-type: none"> <li>• Battery-powered equipment produces zero emissions</li> <li>• No hassle and mess from gasoline and oil</li> <li>• Quieter and more reliable than gas-powered equipment</li> <li>• Require less energy to do the same amount of work as gas-powered tools</li> </ul>	<ul style="list-style-type: none"> <li>• Purchasing from a single brand can streamline charging</li> <li>• Consider the size of your property and battery run time</li> <li>• Backup batteries may be needed for larger properties</li> <li>• Electric equipment is pricier up front</li> </ul>

before they excavate, grade, trench, dig, drill, augur, tunnel, scrape, plow cable or pipe.

[READ THE REST OF THE ARTICLE](#)



## KEEP POWER POLES CLEAR

We want to remind all our members that nothing should be placed on the Central Wisconsin Electric Cooperative power poles. This includes, but is not limited to: posters, flyers, decorations, birdhouses, lights, etc.

The poles need to be clear of items because sometimes CWEC linemen need to climb the poles, and items on the poles can make that task more difficult and dangerous.



## MAY IS ELECTRICAL SAFETY MONTH

At Central Wisconsin Electric Cooperative (CWEC), we recognize Electrical Safety Month every May, but we also know the importance of practicing safety year-round.

To us, safety is more than a catchphrase. We have taken many steps to keep co-op employees safe. Additionally, we want to help keep you and all members of our community safe. That's why you'll see CWEC hosting electrical safety demonstrations at area elementary schools during the month of May.

We discuss emergency scenarios, such as what to do in a car accident involving a utility pole and downed power lines. We also explain the importance of being aware of your surroundings when flying a kite or fishing.

## NUESKE'S CONTINUES SMOKED MEAT TRADITION

When Nueske's Applewood Smoked Meats in Wittenberg celebrated its 90<sup>th</sup> anniversary in 2023, a community event was held that attracted 8,000 people to the property that houses Nueske's retail store. Since the village of Wittenberg has a population of just under 1,000 people, you could say it was more than a "community" event.

"We love being part of the community and we want other people to feel a part of it too," said Tanya Nueske, CEO and President

of Nueske's. "It was important to us to have an all-inclusive, family friendly event. Everything we did that day was very family focused."

The event was held on Sept. 16, 2023. The festivities began at 7:30 a.m. with a pancake breakfast and culminated with fireworks at dusk. There were food trucks on-site, old cars and tractors, helicopter rides, a ping pong ball drop for 3,500 prizes, axe throwing, chainsaw carving, camel rides, a mobile escape room, petting zoo, old-time photography, and pig, duck and goat races.

There is plenty of history behind Nueske's reaching its 90<sup>th</sup> anniversary, and Nueske said the community is an important part of that history.



[READ THE REST OF THE ARTICLE](#)

[Bill Payment Options](#)

[Energy Conservation Rewards](#)

[Small Business Loans](#)

[Operation Round Up Information](#)

[Thinking about adding solar energy?](#)

[Community Events Calendar](#)



**Central Wisconsin Electric Cooperative**  
10401 Lystul Road  
Rosholt, WI 54473  
715-677-2211

[Contact Us](#)

Central Wisconsin Electric Cooperative | 10401 Lystul Road, Rosholt, WI 54473

[Unsubscribe](#) [brenda.mazemke@cwecoop.com](mailto:brenda.mazemke@cwecoop.com)

[Update Profile](#) | [Constant Contact Data Notice](#)

Sent by [cwec@cwecoop.com](mailto:cwec@cwecoop.com) powered by



Try email marketing for free today!