



June 2024

HIGH SCHOOL STUDENTS ENCOURAGED TO SIGN UP FOR YOUTH LEADERSHIP CONFERENCE

Each year Central Wisconsin Electric Cooperative (CWEC) sponsors students from area high schools to attend the Youth Leadership Conference (YLC). This year's YLC will be held at UW-Stout, July 16-18. To register for YLC, or if you have any questions, contact [**Bert.Lehman@cwecoop.com**](mailto:Bert.Lehman@cwecoop.com)



The Conference is a three-day event for youth leaders across Wisconsin to develop their leadership skills while learning about the purpose, operation, and scope of cooperative businesses. The Conference is open to high school students. Attendance will be limited to 200 students based on a first-come, first-registered basis.

The event is sponsored by Wisconsin's electric cooperatives and facilitated by WECA. It's a unique opportunity for youth across Wisconsin to develop their leadership skills while learning the purpose, operation, and scope of cooperative business.

FOR MORE INFORMATION ABOUT YLC

DID YOU GET A CALL FROM CWEC?

With the discontinuance of the load management program for water heaters, we are in the process of contacting members of Central Wisconsin Electric Cooperative who

were part of the program. The purpose of the contact is to schedule an appointment to remove the load management receivers from their water heaters. If you receive a message from CWEC regarding the removal of a load management receiver, please return the message so we can get your appointment scheduled. Only members who have load management receivers will be contacted. If you have any questions, please call 715-677-2213.



UNLOCK COMFORT & SAVINGS

If you're working on your summer to-dos, consider adding home weatherization to your list.

We typically think about weatherizing our homes during winter months when we're standing next to a chilly window or a drafty exterior door. But weatherizing your home provides comfort and energy savings year-round, especially during summer months when your air conditioner is working overtime.



According to energystar.gov, a home with insufficient insulation and air leaks wastes more than 20% of the energy used to heat or cool the home--that's essentially throwing money out the door. Fortunately, most weatherization projects are easy to DIY and can be completed in a day.

READ THE REST OF THE ARTICLE

FOURTH-GRADERS LEARN ABOUT ELECTRICITY SAFETY

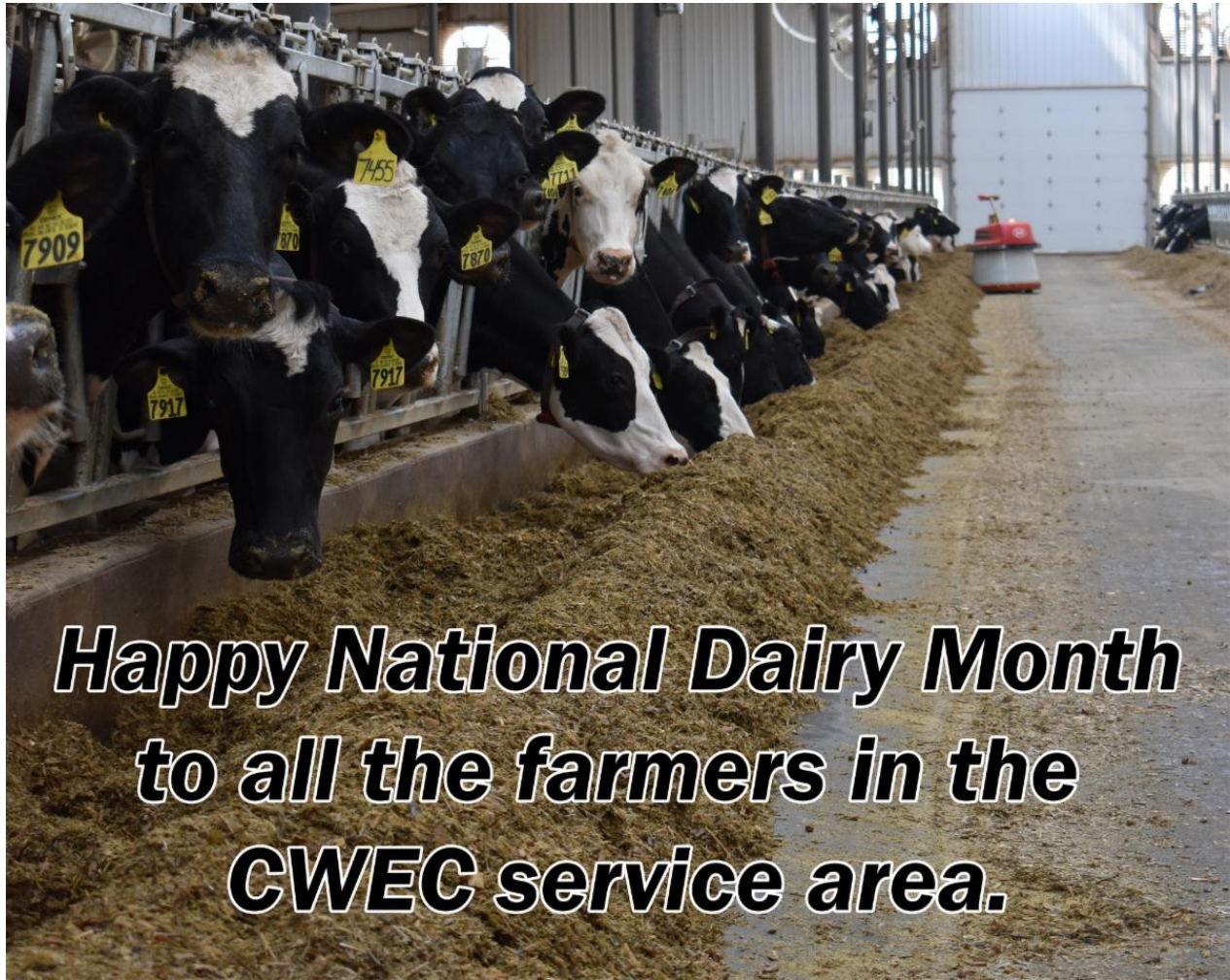
To help promote Electrical Safety Month in May, Central Wisconsin Electric Cooperative (CWEC) once again provided electricity safety demonstrations to fourth grade students at six elementary schools in the CWEC service area. Elementary schools included those located in Birnamwood, Bowler, Iola, Rosholt, Tigerton, and Wittenberg.

The demonstrations were conducted by CWEC linemen, and showed students firsthand the dangers that could occur if they aren't safe

around electricity. Students got to see some of the safety equipment a lineman has to wear when they work around power lines. They were also shown examples of what overhead and underground power lines look like, and why they are constructed the way they are. Linemen also showed the students what happens if a tree branch, kite string, and fishing line come in contact with a power line.



[READ THE REST OF THE ARTICLE](#)



GOING STRONG MORE THAN 100 YEARS LATER

While already operating a successful logging company in 1999, Darrell and Kim Javorek decided to take on an additional challenge by purchasing the family farm from Darrell's

dad.

Purchasing the family farm, which had sat idle for a couple of years, wasn't necessarily the original plan the couple had, but they had a good reason for their action.

Darrell said his dad was going to start splitting the farm into pieces and selling it. That's something Darrell said he just couldn't bear to see.



"So, we bought cows," Darrell said.

The cows didn't come right away, though, as the couple spent a year updating the farm in preparation for cows. The tie-stalls in the barn were replaced, and a milking parlor was added.

READ THE REST OF THE ARTICLE

Electricity Safety Poster Contest Winners



Everly Hauser
Tigerton
Elementary School



Ean Schulist
Rosholt
Elementary School



Charlotte Parker
Tigerton
Elementary School

Central Wisconsin Electric Cooperative (CWEC) has announced the winners of the Electricity Safety Poster Contest held for third-grade students at the elementary schools in the CWEC service territory. The local students who created the top three posters and the prizes they won are listed below:

- First Place** – Everly Hauser, Tigerton Elementary School; \$25 prepaid debit card from Wisconsin Electric Cooperative Association (WECA) and a check for \$25 from CWEC.
- Second Place** – Ean Schulist, Rosholt Elementary School; \$15 check from CWEC.
- Third Place** – Charlotte Parker, Tigerton Elementary School; \$10 check from CWEC.

The top three posters also advanced to a state competition hosted by WECA.

Congratulations to the top three students, and thank you to all the students who participated.

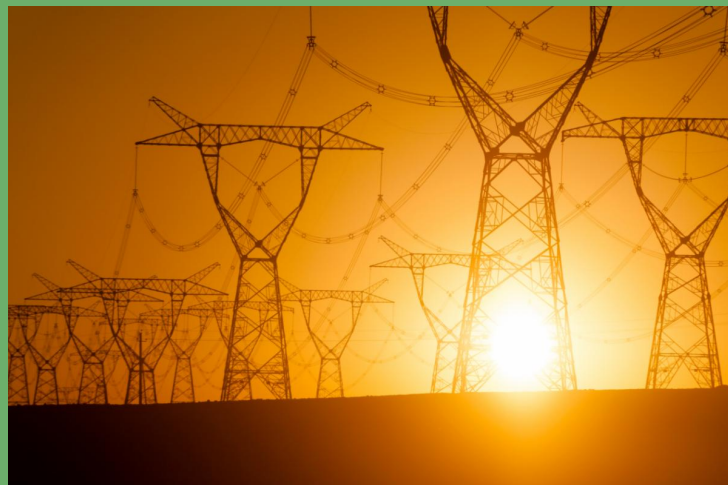
Some of the posters submitted for the contest are on display in the lobby at CWEC headquarters in Rosholt.

NEW EPA POWER PLANT RULES THREATEN GRID RELIABILITY

On April 25, the Environmental Protection Agency (EPA) released four major new regulations for the electric industry, including a much-anticipated rule to cut emissions from power plants, a sweeping move that will aggravate reliability concerns for electric cooperatives and other utilities nationwide.

"The path outlined by the EPA is unlawful, unrealistic and unachievable," said Jim Matheson, CEO of the National Rural Electric Cooperative Association. "It undermines electric reliability and poses grave consequences for an already stressed electric grid."

The power plant rule constrains existing coal and new natural gas plants by requiring them to install carbon capture and storage (CCS) technology that is not yet reliable or commercially available.



[READ THE REST OF THE ARTICLE](#)

[Bill Payment Options](#)

[Energy Conservation Rewards](#)

[Small Business Loans](#)

[Operation Round Up Information](#)

[Thinking about adding solar energy?](#)

[Community Events Calendar](#)



**Central Wisconsin
Electric Cooperative**
10401 Lystul Road
Rosholt, WI 54473
715-677-2211

[Contact Us](#)

Central Wisconsin Electric Cooperative | 10401 Lystul Road | Rosholt, WI 54473 US

[Unsubscribe](#) | [Update Profile](#) | [Constant Contact Data Notice](#)



Try email marketing for free today!