



February 2025

ENERGY STAR APPLIANCES: DO THEY REALLY SAVE YOU MONEY?

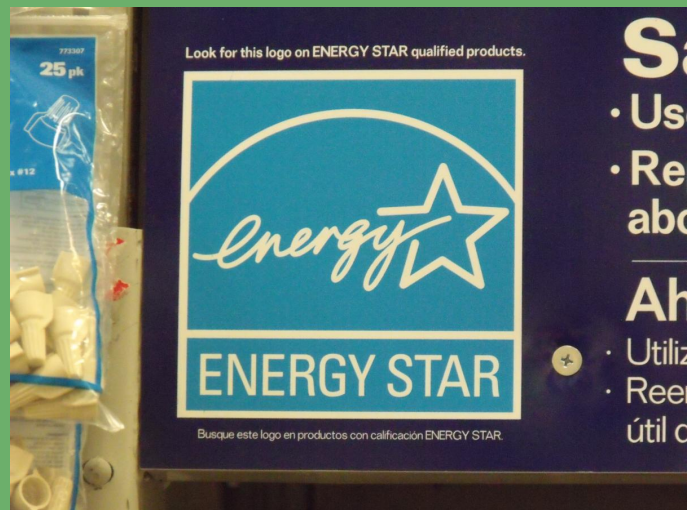
If you are in the market for a new appliance, you might wonder if buying an ENERGY STAR-certified version will make a difference in your energy bills.

The **short answer is yes**, when you compare its estimated energy costs to its less efficient counterpart.

In fact, there are really two costs to consider before buying an appliance: the cost itself and the projected monthly energy costs.

The energy-conscious appliances donning the square-shaped Energy Star logo use 10 to 15 percent less energy and water than standard models, according to [Energy.gov](https://www.energy.gov). For example, Energy Star clothes washers use about 40 percent less energy than conventional clothes washers while also reducing water bills.

And the **longer answer is yes**, if you consider the appliance's lifespan.



READ THE REST OF THE ARTICLE

CWEC 87TH ANNUAL MEETING

Thursday, April 10

**Wittenberg-Birnamwood
High School
400 W Grand Avenue
Wittenberg, WI 54499**



ENERGY ASSISTANCE AVAILABLE

Central Wisconsin Electric Cooperative's Commitment to Community Program is designed to help households with their energy costs, including electric bills. For many Wisconsin households, energy costs place a severe and continuing stress on the family budget. To better serve our members, CWEC is part of the Wisconsin Home Energy Plus (HE+) program. This program is funded through public benefits and federal dollars to help eligible low-income households pay for home energy assistance and weatherization. Members may be eligible for energy assistance if they meet the HE+ program guidelines. Members should contact their local agency to determine eligibility.

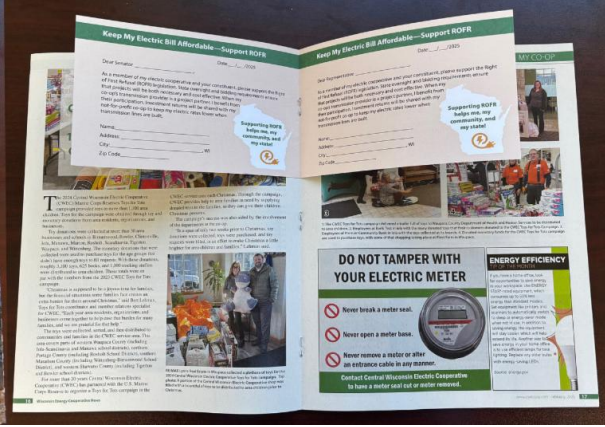
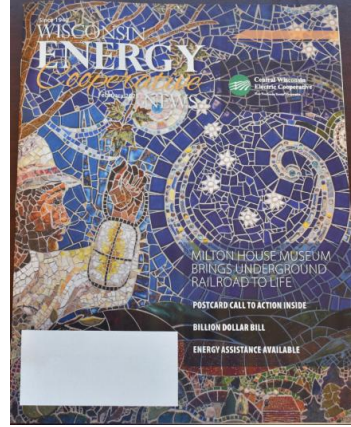


[MORE INFORMATION ABOUT ENERGY ASSISTANCE](#)

HELP KEEP WISCONSIN ENERGY AFFORDABLE

We are asking for the help of our members to encourage their state representatives to pass the Right of First Refusal

legislation in the state legislature. Members can help by filling out the postcards inserted in the center of the February 2025 issue of Wisconsin Energy Cooperative News and mailing them to their state



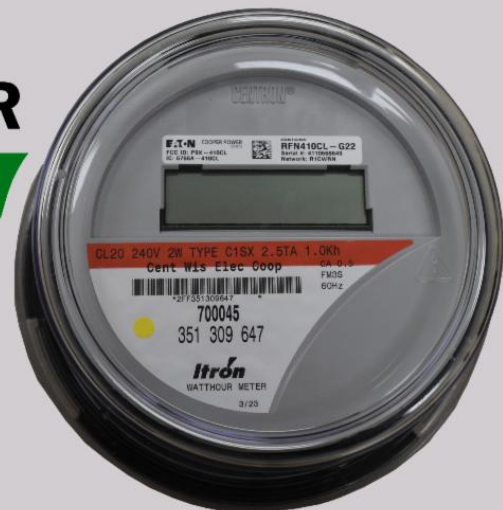
senator and state representative in Madison. Members can learn more about the Right of First Refusal legislation by reading Rob Richard’s column on page 8 of that issue of the magazine, as well as the article titled “Billion Dollar Bill” that starts on page 10.

To find who your state senator and representative are, visit: <https://maps.legis.wisconsin.gov/>

FOR MORE INFORMATION ABOUT RIGHT OF FIRST REFUSAL

DO NOT TAMPER WITH YOUR ELECTRIC METER

-  Never break a meter seal.
-  Never open a meter base.
-  Never remove a meter or alter an entrance cable in any manner.



Contact Central Wisconsin Electric Cooperative to have a meter seal cut or meter removed.

BALANCING ELECTRICITY SUPPLY & DEMAND

Electricity is essential for nearly every aspect of daily life--so essential that we rarely think about how it’s produced and delivered to our homes. You might be surprised to learn that behind the scenes, a network of

experts is working daily (and even by the minute) to anticipate how much electricity you need before you even use it.

We're all connected to the electric grid, so ensuring the right amount of electricity for all involves a complex process of forecasting energy demand, planning for capacity and securing enough supply to meet Americans' needs.



[READ THE REST OF THE ARTICLE](#)

TIPS TO AVOID ENERGY SCAMS



Be cautious of fraudulent websites pretending to be an electric utility. Scammers often create look-alike sites to steal your personal or payment information. Always type your utility's official web address directly into your browser instead of clicking email or text links. Watch for signs of a secure website, such as "https://" in the address bar and a padlock icon. If you're ever unsure, call your utility company using the official phone number listed on your bill to verify payment or account details. Stay vigilant to protect yourself from utility fraud.



CHRISTMAS COLORING CONTEST WINNERS

The following children were randomly chosen for the top prizes for the Christmas Coloring

contest hosted by
Central Wisconsin
Electric Cooperative.

First Prize: Elsie
Vanderkooy

Second Prize: Marcie
Gagas

Third Prize: Waylon
Skierka



STAY IN THE KNOW



Stay connected by keeping your contact information up to date. Current contact information benefits you in multiple ways.

- ✓ Faster outage reporting and response
- ✓ Timely alerts about planned outages and other important updates
- ✓ Smoother customer service interactions
- ✓ Improved access to member benefits and programs

Ensure your phone number, email address and mailing address are up to date so you can enjoy the benefits of staying connected.

[UPDATE YOUR CONTACT INFORMATION](#)

[Bill Payment Options](#)

[Energy Conservation Rewards](#)

[Small Business Loans](#)

Operation Round
Up Information

Thinking about
adding solar
energy?

Community
Events Calendar



**Central Wisconsin
Electric Cooperative**
10401 Lystul Road
Rosholt, WI 54473
715-677-2211

Contact Us

Central Wisconsin Electric Cooperative | 10401 Lystul Road | Rosholt, WI 54473 US

[Unsubscribe](#) | [Update Profile](#) | [Constant Contact Data Notice](#)



Try email marketing for free today!