



Lila Shower, President & CEO

UNDERSTANDING YOUR ELECTRIC BILL

One of the things that we receive the most questions about from members is how to understand their electric bill. We try to be as transparent as possible to you, our member-owners, on how we bill you. I am going to go down the list on the accompanying electric bill and give a brief explanation of each item on your bill.

Power Supply A costs are what the co-op is charged per KWH plus demand from our power supplier, as well as administration to procure power. Also, included in this rate is what American Transmission Company (ATC) charges us to deliver the power to our substations, as well as administrative services to secure transmission.

Distribution A costs are associated with building and maintaining the co-op's electric grid to serve all our members. This includes all our poles, power lines, substations, transformers, and plant. These are not customer specific but related to providing the facilities needed to be able to service all members collectively.

Power Cost Adjustment (PCA) is associated with increasing and decreasing

power costs from our wholesale supplier each month. We have a contract with our supplier that includes cost adjustments. Prices of natural gas fluctuate and that causes our cost of power to fluctuate as well. We are billed an estimated cost each month, and then after the fact, there is a "true-up" to the cost that we were charged. Sometimes the true-up is a credit and sometimes it is an additional expense. That is why the PCA can be different each month. In a perfect world we would have a 0.00 PCA, and that does happen occasionally.

Basic Charge includes all the expenses related to the facilities directly connected to your home, such as wires and meters, and also accounting, customer programs, and collections.

Sales tax is not charged during the winter months if this is your main residence, per state law.

Public Benefit Tax is a state-mandated program that uses the dollars collected for conservation programs and low-income assistance. The state tells us the amount we are to bill our members each month.

Operation Round Up is for partici-

Current Bill Information		\$ Amount
POWER SUPPLY A	526 KWH @ \$0.0944	49.66
DISTRIBUTION A	526 KWH @ \$0.0670	35.24
POWER COST ADJUSTMENT	526 KWH @ \$0.02163	11.38
BASIC CHARGE	30 days @ \$1.2493	37.48
STATE TAX		6.69
COUNTY TAX		0.67
PUBLIC BENEFIT TAX		1.33
OPERATION ROUND UP		0.55
TOTAL CURRENT BALANCE DUE 08/04/24		143.00
BALANCE PRIOR TO THIS BILLING		0.00
Mailing Date	07/09/2024	Net Due
Due Date	08/04/2024	143.00

pating members who elect to have their monthly electric bill rounded up to the nearest dollar. All funds collected through Operation Round Up are given to local concerns, with no funds used for electric bills, administrative costs, or political purposes. On average the annual donation will be around \$6 per member. Collectively, and for just pennies a month, we can make a difference in our communities.

I hope this will help you better understand your monthly electric bill. Please call our office if you have any questions.

Looking ahead to October, please plan to join us for our annual Member Appreciation Breakfast at our office outside of Rosholt on Saturday, Oct. 26. I look forward to seeing you. Have a great month.

ENERGY EFFICIENCY TIP OF THE MONTH

Now is the time to schedule annual maintenance for your home's heating system. During fall months, HVAC technicians are typically less busy, making this an excellent time for maintenance and any necessary repairs before the winter months.

A qualified technician can clean filters, check for leaks and ensure all system components are working efficiently to keep your home cozy and warm when the temperatures begin to drop.

BOARD MEETING SUMMARY

A regular meeting of the Board of Directors of Central Wisconsin Electric Cooperative was held at 7:55 a.m. on June 27, 2024. The following is a summary of the meeting activities. The agenda, minutes of the May 30, 2024, meeting, new and terminated memberships, and the monthly safety and compliance report were approved.

Action Items

- Monthly Financial Statements and Reports reviewed by the Finance Committee.
- A proposal to move two feeder lines in Wittenberg was approved.
- The board reviewed the results from the board self-evaluation.
- Directors Zander and Lehrer were nominated for the Badger Power Cooperative Annual Meeting Board of Directors with Director Schultz as an alternate.

Operations and Engineering – Mr. Kurtzweil gave an update on the HVAC systems. The software still needs to be tied into the units. Outages were reported on May 21 and 24, 2024. Two linemen went to Washington Island to help restore power after a tornado was reported.

Accounting and Finance – Financial reports were presented by Ms. Claussen. The annual workers compensation audit was completed and submitted. Eaton completed the 4-meter configurations. The meters were programmed and configured correctly. There were 60 disconnects in May.

Member Services – Ms. Mazemke gave an update on the Preventing Outages and Enhancing the Resilience of the Electrical Grid Grants. They have been approved by the Public Service Commission and have been forwarded to the Department of Energy for final review. Safe Electricity demonstrations took place at several area schools.

President and CEO – Lila Shower, CEO, reported on her submitted report. Meeting adjourned at 12:14 p.m.

OPERATION ROUND UP CONTINUES TO HELP AREA COMMUNITIES



WHAT IS OPERATION ROUND UP?

Operation Round Up provides funds for worthwhile causes, including member hardship cases, educational purposes including scholarships, and charitable organizations. It is funded by volunteer donations from CWEC co-op members, allowing them the opportunity to give back to our local communities, a few cents each month.

Electric bills are simply “rounded up” to the next whole dollar amount. The monthly “round up” could be as little as a single penny, but never more than 99 cents. The average donation is \$6 annually, which is tax deductible. Operation Round Up is an opt-out program.

The funds are held separately from any Central Wisconsin Electric Cooperative funds and are administered by a member Board of Trustees. Applications are made for grants and these are reviewed quarterly for disbursement of funds.



Above, left to right: Rosholt School District, Jensen Community Center

Left: Scandinavia Fire Department

Below, left to right: American Legion Sheveland-Taylor Post 14 Iola, Bowler School District



FIRST QUARTER DONATION RECIPIENTS:

- \$1,000 – Individual Medical Hardship donation.
- \$1,000 – Family Medical Hardship donation.
- \$1,000 – Individual Medical Hardship donation.
- \$1,000 – Town of Sharon First Responders to help pay for a CO detector for each of the 11 responders.
- \$300 – Iola Historical Society to help with their five projects with high priority merit and demand that presently stand out for 2024.
- \$300 – Walls of Wittenberg for sponsorship of the Best of Show Award for their Artists Tree Play XI Show.
- \$250 – Wittenberg-Birnamwood Booster Club for the W-B Booster Bash fundraising event. All proceeds and donations go back to the various activities and needs they sponsor in their district.

SECOND QUARTER DONATION RECIPIENTS:

- \$1,000 – Scandinavia Volunteer Fire Department to help purchase new equipment for their volunteers.
- \$500 – VFW Auxiliary Elderon Memorial Post 8068 to help with their holiday appreciation gifts for local veterans at King Veterans Home.
- \$500 – American Legion Sheveland-Taylor Post 14 Iola to help pay for their special projects to honor their veterans.
- \$500 MAMA House of Hope to help purchase food products for the pantry and the school backpack program.
- \$300 – Jensen Community Center to sponsor a youth soccer team’s shirts.
- \$250 – Birnamwood Polka Days to help with sponsorship of their three-day event.
- \$250 – Wittenberg-Birnamwood Booster Club for their 2024 Grad Bash event.
- \$250 – Iola Lions/Lioness to help with their 28th Annual Iola-Scandinavia Post Prom Party.
- \$250 – Tigerton School District for its 4K/ Kindergarten swimming program.
- \$250 – Bowler School District for their high school Class of 2024 graduation party.

**TOTAL
OPERATION
ROUND UP FUNDS
DONATED:
\$683,064**

THIRD QUARTER DONATION RECIPIENTS:

- \$500 – Jensen Community Center to help with its community center expansion project.
- \$500 – Rosholt School District to help with the purchase of a new digital piano for their district.
- \$500 – American Legion Post 509-Rosholt to help pay for the cost to redo their parking lot.
- \$250 – Town of Sharon-Polonia Park to help offset some of their Steak Night fundraiser expenses.



SADIE OSTROWSKI SHARES YLC EXPERIENCE

Sadie Ostrowski, a student at Wittenberg-Biramwood High School, said she originally decided to attend this year’s Youth Leadership Conference (YLC) at UW-Stout in July because it would be a great opportunity help prepare her for college and help her obtain scholarships for college.

“I thought that would be a good step forward,” Ostrowski said.

But at the conclusion of YLC, Ostrowski realized she had gotten more out of YLC than just helping to prepare her for college. She said in addition to having a lot of fun at YLC, she also learned a lot. This came from the many speakers who spoke at YLC, including two linemen from Central Wisconsin Electric Cooperative, who spoke about their time working on the Light Up Navajo Project on the Navajo Nation in Arizona, to bring electricity to residents who don’t have it.

“It was just a really great experience,” Ostrowski said.

She added, “My favorite part was the team bonding activities that we did

because it really helped me get to know a lot of people. I learned why they were here and a little bit about them. It was really helpful.”

Ostrowski said she also learned what co-operatives are and why they are important.

“I learned that we have co-ops for a reason and that we are able to do so much within them,” she said.

While at YLC, Ostrowski ran for the Youth Board, which included doing a campaign speech in front of all the YLC attendees. After all those running for Youth Board gave their speeches, the YLC attendees voted for who they wanted to be on Youth Board. Those elected to Youth Board help plan and run next year’s YLC event, among other duties.

“I decided to run for Youth Board because I was having such a great time,”



Sadie Ostrowski

Ostrowski said. “I wanted to make a great time for a ton of other people there. I figured the best way to do that was running for Youth Board.”

She said speaking in front of the group didn’t bother her.

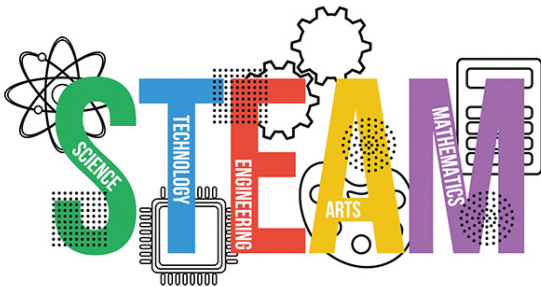
“I was just making sure I hit all the points I wanted to hit, and making sure it was effective and short enough that everyone learned something,” Ostrowski said.

Unfortunately,

Ostrowski wasn’t elected to Youth Board. Despite that, she said there are plenty of other opportunities that she can take advantage of through YLC, adding she plans to attend next year and run again for Youth Board.

Ostrowski also recommended that high school students should attend YLC.

“I think it’s a great opportunity to learn what a cooperative is, to make a ton of friends, to have a well-rounded background, and to have good opportunities for scholarships,” she said. “And I think it’s just a great program.”



STEAM GRANT APPLICATION DEADLINE APPROACHING

The next deadline for area school districts to apply for STEAM grant funding through Central Wisconsin Electric Cooperative (CWEC) is Oct. 1. Public schools in Bowler, Iola-Scandinavia, Rosholt, Tigerton, and Wittenberg-Biramwood are eligible to apply. Public charter, private, and home schools are also eligible if they are located within a township that CWEC serves.

Knowing the value of education and training and understanding classrooms may have limited funds, CWEC launched the STEAM grant program in 2022 to support STEAM (Science, Technology, Engineering, Art, and Math) projects and initiatives.

The STEAM grants are available for classrooms with students K-12. The classroom project must be academically focused in the areas of science, technology, engineering, art, or math. The grant can be used to purchase equipment or curriculum materials and should be part of a well-planned and integrated project or activity. School districts may be awarded up to \$1,000 in STEAM grants per academic year. Home schools are allowed to receive up to \$100 per home school, per academic year.

For more information or to apply for a STEAM grant, visit: www.cwecoop.com and find the STEAM Grant page under the Member Services tab.



UPDATE YOUR CONTACT INFORMATION

If any of your contact information has changed, please call our office at 715-677-2211 to let us know your new contact information.

GO ABOVE AND BEYOND FOR A SAFE HARVEST

Modern farming often relies on data and equipment with GPS and auto-guidance systems. However, even with these modern conveniences, farm workers must remain vigilant. That's because farming is considered one of the most dangerous jobs.

Massive machinery is indispensable to farming, but the same impressive size, height, and extensions make them particularly vulnerable to contacting power lines. That's why staying alert, focused, and knowledgeable about potential hazards and safety procedures is crucial.

During a busy harvest season, familiar sights around the farm can easily fade into the background, and farm workers can overlook power lines overhead. However, failing to notice them can lead to deadly accidents.

360 Awareness

Awareness of your surroundings, around, above and below, and planning safe equipment routes can significantly reduce the

risk of accidents. Even with GPS and auto-steering, it's imperative that farm workers keep a close eye on the equipment's location and are ready to take action if necessary.

Exposed underground power lines, defective wiring in farm buildings, and extension cords are also hazards. Grain bins can pose a potential danger as well. The National Electrical Safety Code requires power lines to be at least 18 feet above the highest point on any grain bin with which portable augers or other portable filling equipment are used. If you plan to install new grain bins or you're concerned about the proximity of power lines to existing grain bins, contact Central Wisconsin Electric Cooperative.

Smart Harvest Safety Tips


To ensure a safer harvest season, Safe-Electricity.org recommends the following tips to avoid electrical accidents on the farm:

- **Exercise caution near power lines.** Be careful when raising augers or the bed of grain trucks around power lines.
- **Use spotters when operating large machinery near power lines.** Ensure the spotters do not touch the machinery while it is moving near power lines.
- **Lower equipment extensions, portable augers, or elevators before moving or transporting equipment.** Do not raise equipment such as ladders, poles, or rods into power lines. Remember that non-metallic materials like lumber, tree limbs, ropes, and hay can conduct electricity, especially when damp, dusty, or dirty.
- **Never attempt to raise or move power lines to clear a path.** Doing so could result in electric shock or death.
- **Avoid using metal poles inside bins.** Don't use metal poles to break up bridged grain inside or around bins.
- **Hire qualified electricians.** Have qualified electricians handle work on drying equipment and other farm electrical systems.

While rare, the only reason to exit equipment that has come into contact with overhead lines is if the equipment is on fire. If it happens, jump off the equipment with your feet together and without touching the machinery and the ground at the same time. Then, still keeping your feet together, hop to safety as you leave the area.



Central Wisconsin
Electric Cooperative

Your Touchstone Energy® Cooperative 

10401 Lystul Rd., P.O. Box 100,
Rosholt, WI 54473
715-677-2211 • 800-377-2932

www.cwecoop.com

Follow us on X
and Facebook



Lila Shower, President & CEO

Bert Lehman, Editor

Board of Directors

District 1

Ron Onesti
715-551-9257

Tom Smith
Chairman
715-701-2051

District 2

Lee Lehrer
920-851-4545 – cell
715-677-3850 – home

Lou Oppor
Vice Chairman
608-575-8653

Michael Schultz
715-370-1378

District 3

Sue Rombalski
715-701-2053 - cell
715-341-4571 - home

Allen Zander
Secretary-Treasurer
715-630-8239

Our Mission

We are your trusted energy
partner and provider of
valued community support.

5 Tips for a Safe Harvest

Electrical safety during harvest season requires vigilance and proactive measures. Follow these tips to reduce the risk of electrical accidents.

1. Maintain at least a 10-foot distance from power lines when operating equipment like grain augers, elevators and other tall machinery.
2. Use a spotter to navigate safely around power lines and other electrical equipment.
3. Ensure all farm workers are trained on electrical safety procedures.
4. Regularly inspect all electrical equipment and machinery for signs of wear and damage.
5. Keep first aid kits and emergency contact numbers in an easily accessible location.

