



THANK YOU FOR YOUR UNDERSTANDING

Lila Shower, President & CEO

One thing that everyone here at Central Wisconsin Electric Cooperative (CWEC) prides themselves in doing is providing electricity to our members as safely and efficiently as possible. Sometimes, though, Mother Nature has other ideas and makes our job challenging. That was the case with the two ice storms that the CWEC territory received April 2 and 4.

It was one of the craziest and worst outages CWEC has had in the last 25 years. During the restoration effort after the first ice storm passed through, linemen would restore power to an area and within five minutes, a branch or a tree would fall on the same power line in a different place, once again knocking out power.

Compounding the problem, the transmission lines that feed our substations also experienced outages. We have eight substations and all of them had outages at different times due to the transmission line having trees on their lines. When that happens, the whole substation goes out, and we need to wait until American Transmission Company restores power before we can continue fixing our power lines, replacing

power poles, and detangling trees.

To make matters worse, there were many power poles that need to be replaced, which is very time consuming. It usually takes between 1.5-3 hours to replace a power pole. We are up to 35 poles that had to be replaced during the storm. We had outages in every township we serve, and they were all caused by down trees and branches.

The day after the ice storm we knew the damage was bad enough that we would need help from other electric cooperatives to restore power. We made that request and crews from other co-ops headed our way to help. More crews from other co-ops also made their way to help us in the following days.

Crews worked until about 11 p.m. the first night until it became obvious that it was too dangerous for them to be working in the dark with trees and branches falling unpredictably. The linemen returned to restoring power the next morning at 6:30 a.m. The schedule for each of the following days was for linemen to work from 6:30 a.m. to 10 p.m. until electricity to all members was restored.

Power to all members was restored the afternoon of Tuesday, April 7.

I know a lot of members who were out of power wanted to receive an estimate as to when their power would be restored. Because of the amount of damage to our power grid, it was difficult to provide such estimates. For a normal outage, we would be able to give members an estimated time when an outage would be restored, but with the outage this widespread, it would have been a guess at best.

I appreciate everyone's frustration during the restoration effort. I personally was without power until Sunday night, April 5. I hope this gives everyone a better understanding of the situation the ice storms presented to us. We worked as fast and safely as possible while restoring power. We apologize for the inconvenience and thank everyone for their understanding during the restoration effort.

A big thank you also goes out to everyone who contributed to the restoration effort. This includes CWEC employees, visiting linemen as well as individuals and businesses who bought lunch for our crews at local restaurants. We also had members donate food and snacks for the crews to bring with them when they leave in the mornings.

Restoring power was truly a team effort that was led by Kevin Kurtzweil, our vice president of Operations. His experience and expertise led to an efficient and safe restoration process, which included 34 operations personal from seven Wisconsin cooperatives: Barren, Chippewa, Taylor, Riverland, Price, Clark, Adams Columbia, and our contractor, Jolma Utilities. A sincere thank you to all who helped, including those who sent prayers to keep everyone safe.

Lastly, I and our accounting and finance department are working with the Wisconsin Disaster Relief fund (WDR) to apply for funds to help pay for this Easter Ice Storm event.

Have a great month!

BOARD MEETING SUMMARY

A regular meeting of the Board of Directors of Central Wisconsin Electric Cooperative was held at 7:55 a.m. on February 26, 2026. The following is a summary of the meeting activities. The agenda, minutes of the January 22, 2026 meeting, new and terminated memberships, the monthly safety and compliance report, and the estate capital credit retirements were approved.

Action Items

- Monthly Financial Statements and Reports were reviewed by the Finance Committee.
- The Board approved the 2026 WACC rate for discounted estate retirement at 5.84%.
- The Board approved the Federated Youth Foundation Donations for 2026.

Operations and Engineering – Mr. Kurtzweil submitted a written report. A new apprentice lineman has been hired and will start on Monday, March 9, 2026. Kevin checked on the progress of two area community projects.

Accounting and Finance – Financial reports were presented by Ms. Claussen. The PCA for January was -\$0.00442. The auditors were onsite on February 4, 2026, and are working on concluding the audit. The rate evaluation work has been completed.


Member Services – Mr. Lehman submitted a written report. All work has been completed on the Fairview Grant Project. The next quarterly reports are due April 15, 2026. The Member Appreciation Breakfast will be held on Saturday October 24, 2026, at the Rosholt headquarters.

President and CEO – Lila Shower, CEO, reported on her submitted report.

The meeting was adjourned at 10:51 a.m.



Central Wisconsin
Electric Cooperative

Your Touchstone Energy® Cooperative 

ICE STORMS

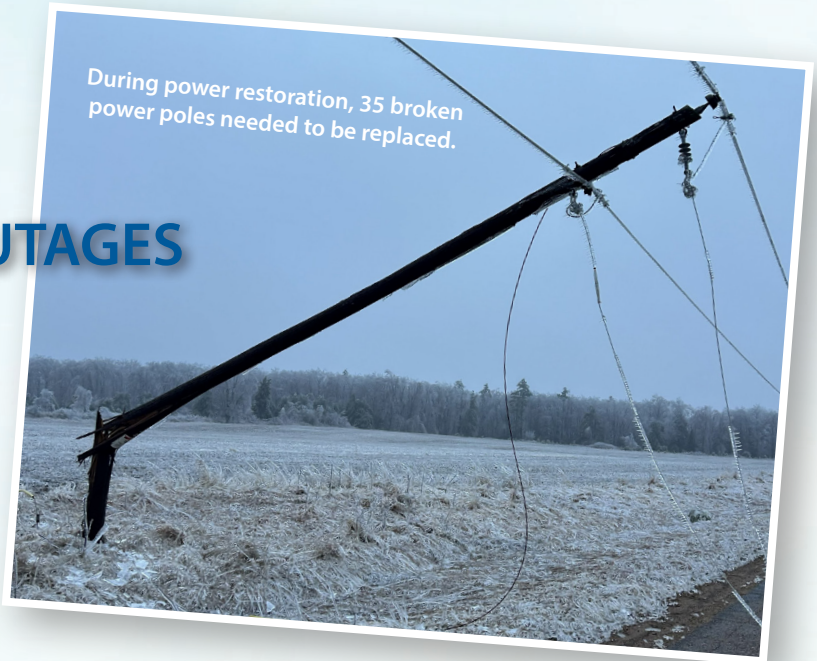
KNOCK OUT POWER, CAUSE WIDESPREAD OUTAGES

While ice may be good for hockey and ice skating, it can wreak havoc on an electric grid if too much ice accumulates on branches and trees and power lines.

That was the case when two ice storms rolled through the Central Wisconsin Electric Cooperative's (CWEC) service territory Thursday, April 2 and Saturday morning, April 4, leaving extensive damage and power outages. At one point, more than 6,000 meters, about 75% of CWEC roughly 8,400 meters, were out of power. CWEC, through the Restoration of Power in an Emergency program, requested help to restore power from other electric co-ops in Wisconsin.

"Cooperation Among Cooperatives" is one of the seven principles that all cooperatives follow. When CWEC needs help restoring power, a request is made to other cooperatives, who send available linemen crews to help. When other cooperatives need help, CWEC will also help them if CWEC has available linemen crews.

Initially, three additional crews of six linemen from other cooperatives traveled to CWEC to help with power restoration. More crews from other cooperatives arrived over the weekend. In total, CWEC received help from seven electric cooperatives and one utility company. This added 24 linemen to the power restoration effort.



During power restoration, 35 broken power poles needed to be replaced.

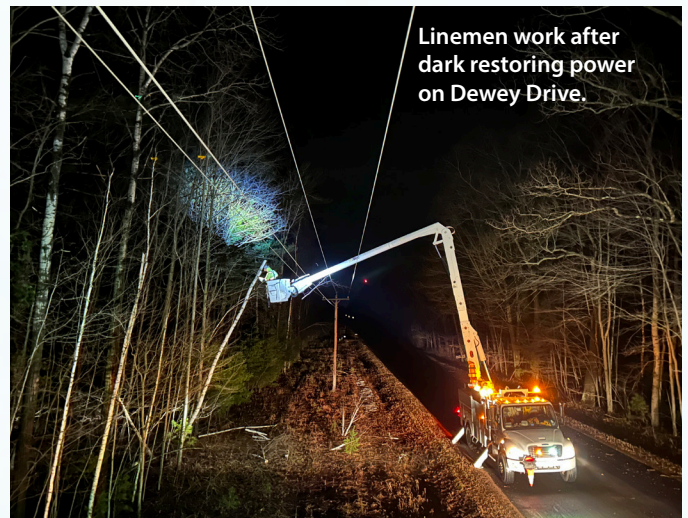
Work was difficult the first day as branches and trees kept falling on power lines, causing more outages, sometimes in the same areas where power was recently restored. This meant multiple outages were restored to the same meter.

The original plan was for linemen to work through the first night, but when darkness arrived and branches and trees continued to fall in no predictable manner, linemen were pulled from the field due to safety concerns. Linemen returned to the field to restore power at 6:30 a.m. Friday morning. Throughout the power restoration effort, linemen would work from 6:30 a.m. to 10 p.m. each day, including Easter Sunday.

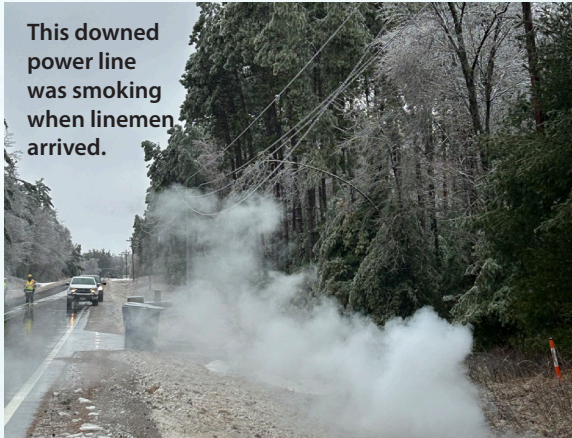
Another ice storm hit the evening of Friday, April 2 and the early morning of Saturday, April 3. This caused more power outages, some in the same areas where power was restored the previous day.



This broken power pole was lying on the roadway of North Lake Road.



Linemen work after dark restoring power on Dewey Drive.



This downed power line was smoking when linemen arrived.



Freezing rain caused a thick layer of ice and icicles to form on this transformer.



Not only did fallen trees break through power lines, trees also blocked roadways, which caused difficulty while traveling in the area.

The process of restoring power was long and strenuous. When an outage comes in, it is impossible to know exactly what the crews will be dealing with until they get to the site. Nothing could have prepared them for the destruction they encountered in a number of our service areas. Linemen dealt with many downed power lines, broken power poles, and branches and trees on power lines.

Eventually, electricity to all members was restored by the end of the day, Tuesday, April 7.

The restoration effort involved replacing 35 power poles and 10 transformers.

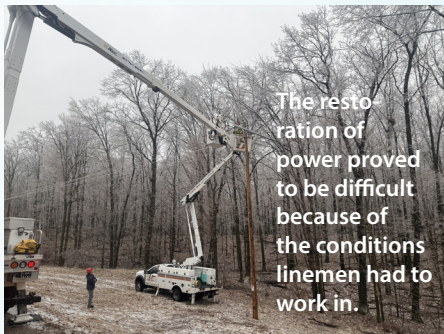
A total of 1,600 gallons of fuel was used while restoring power. In total, power was restored to 30,000 meters, meaning power was restored multiple times to the same meter. CWEC also received a total of 4,212 calls during the outage.

CWEC could not have restored power alone. We were lucky to have our community, co-ops, and contractors rally around us during our time of need. CWEC would like to thank Adams Columbia Electric Cooperative, Barron Electric Cooperative, Clark Electric Cooperative, Chippewa Valley Electric Cooperative, Price Electric Cooperative, Riverland Energy Cooperative, Taylor

Electric Cooperative, and Jolma Utilities for sending crews and equipment. Thank you to our local restaurants for helping feed the linemen while they were out in the field. There were also a number of individuals who brought food to CWEC to help feed the linemen and we thank them for that.

We also thank our members for their patience, understanding and kindness. Being out of power for long stretches of time is frustrating. We appreciate your kind words and actions. Many members also shared encouraging thoughts on our Facebook page.

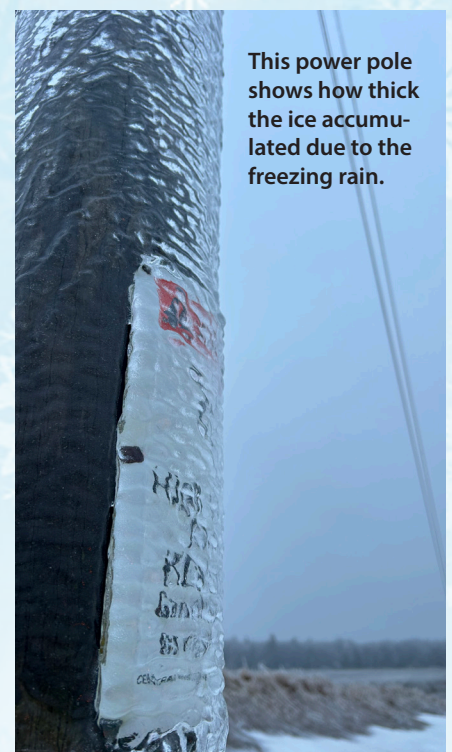
Your comments did not go unnoticed.



The restoration of power proved to be difficult because of the conditions linemen had to work in.



This power line didn't break, but a tree fell on it.



This power pole shows how thick the ice accumulated due to the freezing rain.



Linemen and operations personnel gather for a photo before heading out into the field to restore power.

YOUTH LEADERSHIP CONFERENCE SET FOR JULY 14-16

For high school students who will be a sophomore or junior in the fall, Youth Leadership Conference is designed specifically for you. This three-day, all-expense paid program is jammed with fun, hands-on activities and seminars designed to help students identify and develop their leadership skills. It is planned by high school students and features nationally recognized speakers.



This year's event, scheduled for July 14-16, will once again be held at UW-Stout in Menomonie.

High school students who are interested in being a sponsored representative of Central Wisconsin Electric Cooperative, please contact your high school guidance counselor or Bert Lehman at 715-677-2220 or by email at bert.lehman@cwecoop.com. Registrations are due by June 23.

For more information visit www.cwecoop.com.

2026 MEMBER PHOTO CONTEST

"Life in Rural Wisconsin"

Central Wisconsin Electric Cooperative is holding its annual photo contest for members' photos to be featured in our 2027 calendar. Winning photos may be used in future newsletters or cooperative publications.



- Photos must be taken within the Central Wisconsin Electric Cooperative service area. Photos should capture life in rural Wisconsin (seasons, wildlife, landscape, people, etc.)
- Photos must have a horizontal (landscape) orientation.
- Photos can be in color or black and white.
- Contest will run until **August 25, 2026**; however, submitted photos can be taken during anytime of the year.

Photo Contest Entry Options:

Email: Bert Lehman at bert.lehman@cwecoop.com

Mail: PO Box 100, Rosholt, WI 54473. (Photo(s) must be 8"x10" in size)

Online: www.cwecoop.com/member-photo-contest

Drop Off: Central Wisconsin Electric Cooperative Office – 10401 Lystul Road, Rosholt. (Photo(s) must be 8"x10" in size if dropped off at our office.)


For a complete set of rules as well as entry forms and photo release forms, visit our website at: www.cwecoop.com

We Will Never Forget

Central Wisconsin Electric Cooperative will be closed Monday, May 25 for the Memorial Day holiday. Regular business will resume on Tuesday, May 26. From everyone here at CWEC, we wish you a safe and enjoyable holiday.



Central Wisconsin
Electric Cooperative

Your Touchstone Energy® Cooperative 

10401 Lystul Rd., P.O. Box 100,
Rosholt, WI 54473
715-677-2211 • 800-377-2932

www.cwecoop.com

Follow us on X
and Facebook



Lila Shower, President & CEO

Bert Lehman, Editor

Board of Directors

District 1

Ron Onesti
715-551-9257

Tom Smith
715-701-2051

District 2

Todd Pamperin
715-250-0504

Lou Oppor
Vice Chairman
608-575-8653

Michael Schultz
715-370-1378

District 3

Sue Rombalski
Secretary/Treasurer
715-701-2053 - cell
715-341-4571 - home

Allen Zander
Chairman
715-630-8239

Our Mission

We are your trusted energy partner and provider of valued community support.