

Electric Line Newsletter

By the Community, for the Community October is National Co-op Month

When you think of October, pumpkins, Halloween and beautiful fall foliage naturally come to mind. But October is notable for another reason – it's National Co-op Month! This is the time of year when cooperatives across the country, including Central Wisconsin Electric Cooperative (CWEC), celebrate who we are and more importantly, the members we serve.

Cooperatives are different than other types of businesses. When the market declines to offer a product or service, or does so at a very high price, co-ops intervene to fill the need.

Similar to how CWEC was built by members who came together to bring electricity to our community, cooperatives are conveners for the common good. Your electric co-op exists to provide safe, reliable and affordable energy to you, the members of the co-op. Equally important is our mission to enrich the lives of the members we serve.

As a co-op, we are well-suited to meet the needs of the community because we are locally governed. CWEC's leadership team and employees live right here in the community. Our board of directors, who helps set long-term priorities for the co-op, live locally on co-op lines. These board members have been elected to the position by neighbors like you.

We know our members (that's you!) have a valuable perspective. That's why we are continually seeking your input. Whether through community events, our social media channels or the annual meeting, we want to hear from you.

Our close connection to the community ensures we get a first-hand perspective on local priorities, thereby enabling us to make more informed decisions on long-term investments, such as equipment and technology upgrades, community solar programs, and electric vehicle programs.

Another feature that sets our co-op apart from a traditional utility is one of our core principles, "Concern for Community." We partner with local organizations for programs that benefit the community, such as Toys for Tots.

Ultimately, the larger community benefits from these programs are because of you and your neighbors. You empower the co-op through your membership and through your participation in and support of these programs.

We hope you will think of CWEC as more than your energy provider, but instead as a local business that supports this community and powers economic development and prosperity for the people.

We will continue to learn from our members about their priorities so that we can better serve you – because your electric co-op was built *by* the community, *for* the community.

Contact Us

PO Box 100

10401 Lystul Road

Rosholt, WI 54473

cwec@cwecoop.com

Phone: 715-677-2211

Toll Free:

800-377-2932

Fax: 715-677-4333

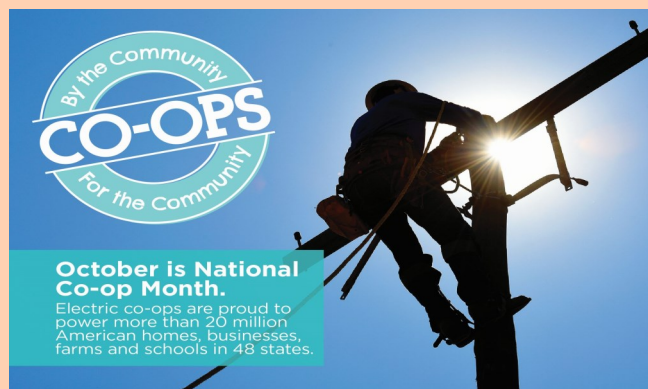
Office Hours: Monday thru
Friday; 7:30am - 4:00pm

Important Dates:

Oct. 14: Columbus Day

Oct. 26: Member
Appreciation Breakfast

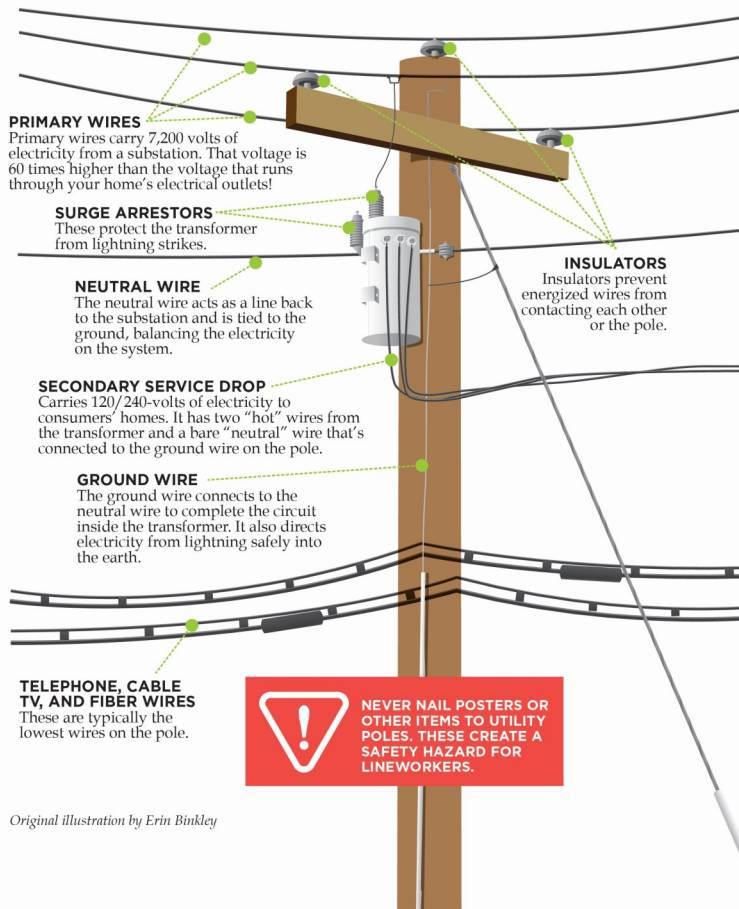
Oct 31: Halloween



Electric Line Newsletter

WHAT'S ON THAT POLE?

This illustration shows the basic equipment found on electric utility poles. The equipment varies according to the location and the service they provide.



Original illustration by Erin Binkley

Member Appreciation Pancake Breakfast

Central Wisconsin Electric Cooperative will hosts its annual Member Appreciation Pancake Breakfast on Saturday, Oct. 26 at its Rosholt location. Breakfast will be served from 8 a.m. to 11 a.m.

Those in attendance will receive a free gift.

Free blood pressure screenings will be provided by Rural Health Initiative nurses Dawn Dingeldein and Rhonda Strebel.

A petting zoo will be provided, with a number of small animals being brought to the event by members of the Rosholt FFA.

Hotline demonstrations will be conducted to allow attendees to learn about safe electricity practices and the dangers electricity can pose.

There will be 25 local craft vendors on hand for those who want to start Christmas shopping.

Several secure and locked recycling bins for paper documents containing sensitive information will be onsite. Members can bring these paper only documents to the event to be shredded.

The Member Appreciation Pancake Breakfast will also kick off CWEC's Toys for Tots toy collection drive. Those bringing a new unwrapped toy to donate will be entered in a special prize drawing.

Hats, Mittens & Scarves For Kids Drive

Central Wisconsin Electric Cooperative is sponsoring a Hats, Mittens & Scarves for Kids Drive.

Hats, mittens and scarves donated by CWEC employees and members will help local children stay warm this winter. Those who donate an item will be signed up for a chance to win a special prize. Limit of five entries per family.

Drop off new, unwrapped items at the CWEC office during normal business hours or bring them to the Member Appreciation Pancake Breakfast on Saturday, Oct. 26.

Those dropping items off at the CWEC office can sign up at the front desk for a chance to win a special prize.

All items collected will be donated to schools in the CWEC service area.