



Central Wisconsin
Electric Cooperative

Your Touchstone Energy® Cooperative

CWEC TO HOST MEMBER FORUMS

As reported in recent issues of the Wisconsin Energy Cooperative News we engaged the services of a consultant to perform a cost of service study. We'll be hosting four Member Forums to share the results of the study with you and to get your input on possible rate adjustments. The days and locations of the Forums are:



Thursday, June 9 in Wittenberg

Wittenberg Community Center
Wittenberg Village Hall
208 W. Vinal St., Wittenberg

Tuesday, June 21 in Iola

Iola Old Car Show Activity Center
130 Jenson Dr., Iola

Thursday, June 23 in Tigerton

Tigerton Community Center
Tigerton Village Hall
221 Birch St., Tigerton

Tuesday, June 28 in Rosholt

Central WI Electric Co-op Headquarters
10401 Lystul Rd., Rosholt

Each Member Forum will begin at 6:30 PM.



By Mike Wade,
President & CEO

FROM HERE TO THERE

Thanks to all of you who joined us for our 78th Annual Meeting at the Rosholt High School. As always, we enjoyed visiting with you and sharing the successes of your cooperative from the previous year. I believe our format changes to the agenda resulted in the membership receiving more information about their cooperative than ever before. And we appreciate the responses you provided in your meeting survey. This will allow us to make improvements that help make the annual meeting even more beneficial.

We were very pleased to have several of our state legislators with us at the meeting. We were joined by State Representatives Katrina Shankland (D-Stevens Point) and Kevin Petersen (R-Waupaca), and State Senator Julie Lassa (D-Stevens Point). They have each been very supportive of co-op issues during the last legislative session and we were glad they were able to join us at our annual meeting.

At the left, you will find a schedule for member forums to be held throughout our service area in June. These meetings are designed to get feedback from our members on the co-op's rates and fees as part of a comprehensive cost-of-service and rate design study. To ensure adequate access to a meeting location, we will be holding the forums in Wittenberg, Tigerton, Iola, and Rosholt. As a member-owned organization, engaging our members on key rate issues is an important step in the cost-of-service study. Member feedback will help us develop rates and options that help us better meet the current and future energy needs of our membership. I hope you will be able to attend one of these meetings so we can get your feedback as we update our rates and fees.

And even though it got off to a slow start, I hope you are enjoying spring and are ready for summer. Time flies fast so make your plans for places to visit and things to do to make the most of spring and summer. Hope to see you in June!



CWEC Celebrates 78th Annual Meeting

CWEC celebrated its 78th Annual Meeting on Saturday, April 9, with more than 200 of its members. The CWEC Annual Meeting at the Rosholt High School started with donuts and coffee at 9 a.m. The Iola-Scandinavia High School Pep Band entertained the members before the business meeting, which began at 10:30 a.m.

Members learned their cooperative provided almost \$162,000 in incentives for energy efficiency upgrades during the past year; has loaned more than \$2.5 million to more than 30 businesses and municipalities through the USDA's Rural Development Loan and Grant program, creating more than 200 jobs; has contributed more than \$393,000 to area projects and individuals since 2004 through Operation Round Up; and is studying the feasibility of a community solar program.

Vice President of Operations Kevin

Kurtzweil detailed Central Wisconsin's participation in the Rural Electric Safety Achievement Program.

Kurtzweil also noted that the cooperative has purchased a tracked digger derrick, giving greatly improved access to locations that have been difficult to maintain, and has also acquired a mini-excavator that's expected to reduce damage to yards and other sensitive areas during digging activity.

The co-op had 90 outages related to tree falls last year, Kurtzweil reported, saying the co-op spent \$400,000 for right-of-way clearing in 2015 and is on a five-year cycle.

Vice President of Accounting and Finance Lila Shower reported that the cooperative returned more than \$244,000 to members during the past year, retiring almost \$158,000 in capital credits and providing more than \$86,000 in energy

conservation credits.

Board Chairman Anthony Buss reported that co-op finances improved in 2015 despite a 4.7 percent decline in kilowatt-hour sales.

Members approved results of the board election conducted by mail. Nate Bennington from CliftonLarsonAllen LLP announced the election results: Incumbent Lee Lehrer, over one challenger, and Elaine Eckendorf, unopposed, were returned to their seats for new three-year terms.

Central Wisconsin is partnering with Adams-Columbia Electric for system design engineering services, building on the existing arrangement to share a portable substation for emergency use and system maintenance, Buss said. He added that a cost-of-service study is underway and could result in a fall rate increase.

CEO Mike Wade re-emphasized



statements made in prior reports and responded to member questions from the floor.

Area food pantries are thankful for the nearly 300 items of food donated by CWEC members at the annual meeting food drive. The food drive also helped to promote the many benefits of switching to CFLs from standard incandescent lighting; each person who donated three or more items was given a CFL bulb.

Door prize winners were Tamara Gutho, James Buss, Robert and Arleen Gross, Audrey Kessen, Harry Jashinsky, Beth McDowell, Anthony Ostrowski, Jim and Sandy Gutt, Tom Kulas, Peter and Toni Kaminski, Clarence Natzke, Roger and Mary Jane Wendler, Ron and Sharon Omernick, Donald Sorenson, Russell Larson, Anthony Danczyk,

James Krause, Steven and Joanne Christian, Carolyn and Lloyd Gutt, Marie Rzentkowski, Donald and Dorothy Berg, Virginia Wentzel, John Willis, Phil Troyanowski, Leonard Haroldson, Dale Clark, Jason and Erin Pliska, Gary Knutson, Norman Kielpinski, Laurette Poltzer, Robert Wierzba, Jason Quade, Mike Schiller, Brian Zych, Leonard Kjer, Donald Lehman, Glen Wiza, Robert Grunewald, Otto Laven, and grand prize winner Ken Watters, who won a 43-inch flat-screen TV.

After the official meeting concluded, a wonderful lunch was served.

Board reorganization kept the lineup of officers in place: Anthony Buss, Jr. continues as chairman; Tom Smith as vice chairman; and Sue Rombalski as secretary/ treasurer. ☐

THANK YOU!

Central Wisconsin Electric Cooperative would like to thank the following vendors for their generous door prize donations to the 2016 Central Wisconsin Electric Cooperative Annual Meeting.

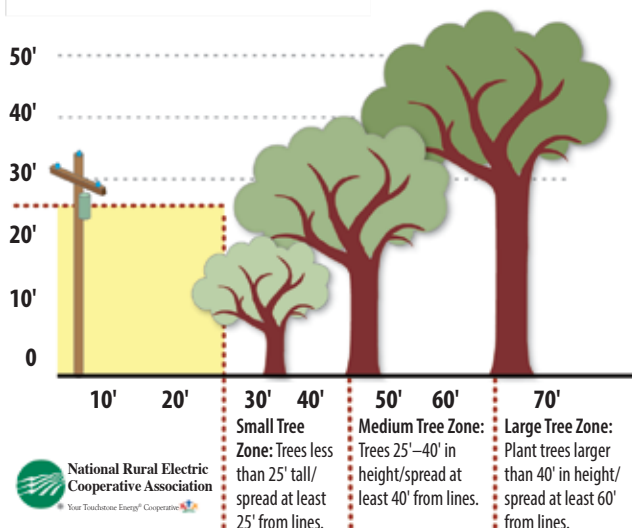
AJ Construction of Wisconsin
Altec Industries-WI
American Transmission Company
Asplundh Tree Expert Co
Bell Lumber & Pole Company
Border States Electric
CallNet Center Services
CoBank
Damage Prevention Services
Energis High Voltage Resources
Gordy's 66 Service & Towing
NISC
RESCO
Schierl Tire & Service
Irby Company
The Benefit Works
Unifirst Corporation
Utility Sales & Services





Tree Planting Guide

Trees planted too close to power lines grow into a big problem. Follow this guide when choosing trees that will be planted near power lines and you can prevent power outages, safety hazards, and additional costs that are incurred when trees are planted too close to the power lines and eventually require trimming or removal. Don't forget to call Digger's Hotline at 811 at least three business days before planting any trees or shrubs so that any underground lines can be located.



DATES TO REMEMBER IN JUNE

FREE Fishing Weekend

Saturday, June 4–Sunday, June 5
Throughout the state of Wisconsin.



Bring Your Tractor to Church Day

Sunday, June 5
Fun starts at 9 a.m., service at 10 a.m., dinner immediately after the service. Hitterdahl Lutheran Church, N8808 Hwy J, Iola. 50/50 raffle burger and brat fry, prizes for the tractors. For more information call 715-445-3331.

3rd Annual Hitterdahl Church Motorcycle Blessing

Saturday, June 4
Registration from 8:30–9:30 a.m., ride to church begins at 9:30 a.m. at Rosholt Cycle, 207 Main St, Rosholt. Blessing at Hitterdahl Church beginning at 10:30 a.m. until complete. You do not need to participate in the ride to receive the blessing. For more information call 715-445-3331.

2nd Annual Pink Flamingo Memorial Ride

Saturday, June 4
Registration 10:30–11:30 a.m., ride leaves at noon. Tigerton Lanes, Tigerton. For more information, call 715-571-704 or 715-326-0204.

Wittenberg Community Days

Saturday, June 11 & Sunday June 12
Saturday starts at 11 a.m. Kids Again Inflatable shows, 2–7 p.m.; Music, 7–11 p.m. Huge fireworks show at dusk. Sunday parade at noon. Washington Park, Wittenberg. For more information go to www.wittenbergchamber.org.

To submit your community events email brenda.mazemke@cwecoop.com or call Brenda at 715-677-2211.

Walls of Wittenberg Presents: "Emerging Talents III"

Saturday/Sunday, June 11–July 3
Reception Sunday, June 12, following parade. Exhibit of original art by Wittenberg–Birnhamwood students, K–12th grade. Show opens 11 a.m.–3 p.m. each day. WOWSPACE 114 Vinal St., Wittenberg. For more information call 715-253-3525 or visit www.wallsofwittenberg.com.

Walls of Wittenberg, First "Third Thursday" Concert

Thursday, June 16
6–8 p.m., WOW Art Park 114 Vinal St., Wittenberg. Free concert and ice cream. Rain or Shine! For more information call 715-253-3525 or visit www.wallsofwittenberg.com.

Flag Day • Sunday, June 14

27th Annual Midwest Renewable Energy Association Renewable Energy and Sustainable Living Fair

Friday, June 17–Sunday, June 19
Friday and Saturday: 9 a.m.–10 p.m., Sunday: 9 a.m.–4 p.m., Custer. For more information call 715-592-6595 or visit www.midwestrenew.org.

Father's Day • Sunday, June 19

32nd Annual Strawberry Fest

Sunday, June 26
11 a.m.–4 p.m. Raffle tickets available \$2 each or three for \$5. First-place \$500 cash prize and many other prizes. Iola Historical Society, Iola. For more information call 715-445-1014 (4652) or visit www.iolahistoricalsociety.org.



STATEMENT OF ELECTION RESULTS – 2016

April 9, 2016

Board of Directors
Central Wisconsin Electric Cooperative
10401 Lystul Road
P.O. Box 100
Rosholt, WI 54473

In accordance with your request, we have completed the count of the Board of Directors election ballots for 2016.

A total of 575 official ballots were received directly from the members.

Based upon the ballots received by us by the close of business on April 8, 2016, the final vote tallies are as follows:

District Number 3

- Elaine Eckendorf: 256 votes

District Number 2

- Lee Lehrer: 224 voted
- Brian Derus: 95 votes

Very truly yours,

James L. Halvorsen, CPA
Principal
CliftonLarsonAllen LLP



Mike Wade, President & CEO

10401 Lystul Rd., P.O. Box 100, Rosholt, WI 54473
715-677-2211 • 800-377-2932
www.cwecoop.com

Follow us on Twitter and Facebook



Central Wisconsin
Electric Cooperative

Your Touchstone Energy® Cooperative



Board of Directors

Anthony Buss, Jr. – Chairman, District 1 • Tom Smith, Vice Chairman, District 1 • Sue Rombalski, Secretary–Treasurer, District 3
Ron Onesti, District 1 (At Large) • Lee Lehrer, District 2 • Leonard Oppor, District 2 • Elaine Eckendorf, District 3